

HermanMiller
Embody®

INNER/SPACE



So intelligent, sitting in it actually helps you think

INNER / SPACE



Embody

Designed by Bill Stumpf and Jeff Weber

Embody began with the recognition of a previously unsolved problem: the lack of physical harmony between people and their technology. Spending too much time sitting in front of our laptops or staring at our tablets, moving nothing but our fingers, can make us stiff and tired because our bodies are made to move. With Embody, designers Bill Stumpf and Jeff Weber set out to solve this problem.

More than 30 physicians and PhDs in the fields of biomechanics, vision, physical therapy, and ergonomics contributed their expertise to help guide the development of this chair. As a result, Embody has set a new benchmark for pressure distribution, natural alignment, and support for healthy movement in ergonomic seating.

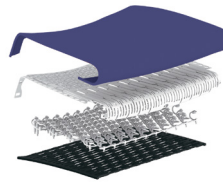


Performance

INNER / SPACE

You feel Embody's Pixelated Support™ the moment you sit down—a sense that you are floating, yet perfectly balanced. Thanks to a dynamic matrix of pixels, Embody's seat and back surfaces automatically conform to your body's micro-movements, distributing your weight evenly as you sit. This reduces pressure and encourages movement, both of which are key to maintaining healthy circulation and focus.

Embodys back is designed like yours, with a central spine and flexible ribs. The Backfit™ adjustment allows you to position the backrest in line with your spine's natural curve, so you achieve a neutral, balanced posture. Once the chair is tuned to fit you, the backrest adapts to your movement, adjusting automatically to your shifting positions. Whether you lean forward or recline, support remains constant.



A combination of support layers in Embody's seat work together to reduce seated pressure. These layers were designed to allow for airflow, keeping you cool and comfortable as you sit.



The Backfit adjustment lets the chair's back embrace your spine's unique curves, holding your head in alignment with your technology.

Embodys tilt technology keeps your back at a proper angle to the seat, allowing your body to move naturally into the most healthful seated postures while keeping your pelvis stable.



Embody's narrow backrest lets your arms and shoulders move unimpeded. This movement helps open your lungs and encourages deeper breathing and more focused thinking.

Design

Form doesn't just follow function with Embody. Function is on full display. Every part of the chair was designed to serve a very specific, healthful purpose. Embody's technology isn't hidden, but is instead part of its aesthetic.

After years of research, design, building, and testing—and then doing it all over again (and again)—the art of design and the science of seating came together perfectly to create Embody.

About Bill Stumpf and Jeff Weber

The Embody story began in the design studio of Jeff Weber and the late Bill Stumpf, who worked with Herman Miller for 30 years on a number of products, including the Ergon® chair, Ethospace® system, and Equa® and Aeron® chairs, which he designed with Don Chadwick. Bill passed away during the development of Embody, and Jeff carried on. "Bill's design spirit will inspire all my future work," says Weber, whose design credits also include the Caper® chair. Stumpf and Weber also teamed up on the design of the Envelop® Desk for Herman Miller.



Bill Stumpf



Jeff Weber

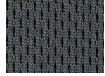
Materials

INNER / SPACE

Embody comes in a range of textile colors and a choice of frame and base finishes to allow you to personalize the look of your chair. Visit hermanmiller.com/materials to see our complete textile offering.

Embody Chair

Seat & Back Textiles



Price Category 2
Rhythm
Charcoal/3015



Price Category 2
Rhythm
Mink/3013



Price Category 2
Rhythm
Black/3014



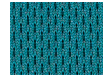
Price Category 2
Rhythm
Molasses/3010



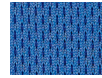
Price Category 2
Rhythm
Mulberry/3011



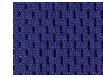
Price Category 2
Rhythm
Green Apple/3002



Price Category 2
Rhythm
Peacock/3003



Price Category 2
Rhythm
Berry Blue/3005



Price Category 2
Rhythm
Iris/3006



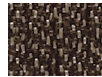
Price Category 2
Rhythm
Twilight/3007



Price Category 4
Mercer
Stone/21301



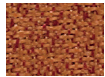
Price Category 4
Mercer
Rattan/21302



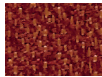
Price Category 4
Mercer
Ash Brown/21309



Price Category 4
Mercer
Charcoal/21310



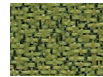
Price Category 4
Mercer
Cayenne/21303



Price Category 4
Mercer
Chutney/21304



Price Category 4
Mercer
Acai Berry/21308



Price Category 4
Mercer
Pesto/21305



Price Category 4
Mercer
Teal Blue/21306



Price Category 4
Mercer
Ultramarine/21307



Price Category 6
Balance
Green Apple/3506



Price Category 6
Balance
Blue Moon/3507



Price Category 6
Balance
Berry Blue/3509



Price Category 6
Balance
Iris/3510

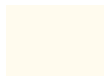


Price Category 6
Balance
Carbon/3512



Price Category 6
Balance
Black/3513

Frame Finish



White
91

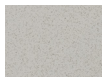


Graphite
G1

Base Finish



Polished Aluminum
CD



Titanium
XT



Graphite
G1

Armpad Finish



Black

Family
Work Chair

Overview

Maximum User Weight
Population Range

300 lbs/136 kg
2nd–98th Percentile

Back Support

PostureFit® Sacral Support
Lumbar Support
Thoracic Support

Standard
Standard
Standard

Seat Height

Low-Height Range
Standard-Height Range
Extended-Height Range

15"–19"
16"–20½"
17"–22"

Seat Depth

Adjustable Seat

15"–18"

Tilt

Tilt Limiter

Standard

Arm Options

No Arms
Fully Adjustable Arms

Environmental Highlights

Recyclability
BIFMA level®
GREENGUARD®
Cradle to Cradle®

Up to 95%
3
Gold
Silver

For more information, please visit innerspace.net.au or call (07) 3252 1461.

® level is a registered trademark of BIFMA International.

® GREENGUARD is a registered trademark of the GREENGUARD Environmental Institute.

® Cradle to Cradle is a registered trademark of McDonough Braungart Design Chemistry.

Printed in the USA. Please recycle.

© 2014 Herman Miller, Inc., Zeeland, Michigan O.CN202
All rights reserved.