

HermanMiller
Atlas Office Landscape®

INNER / SPACE



Designed with people in mind, for space planning that's both intelligent and imaginative

To do their best work, people need workplaces that foster innovation. Many offices, however, still look and feel as though they were designed for another era. At Herman Miller we consider workplace design holistically, and create spaces where the surroundings, furnishings and tools work in concert, creating an environment where people are healthy, productive and engaged.

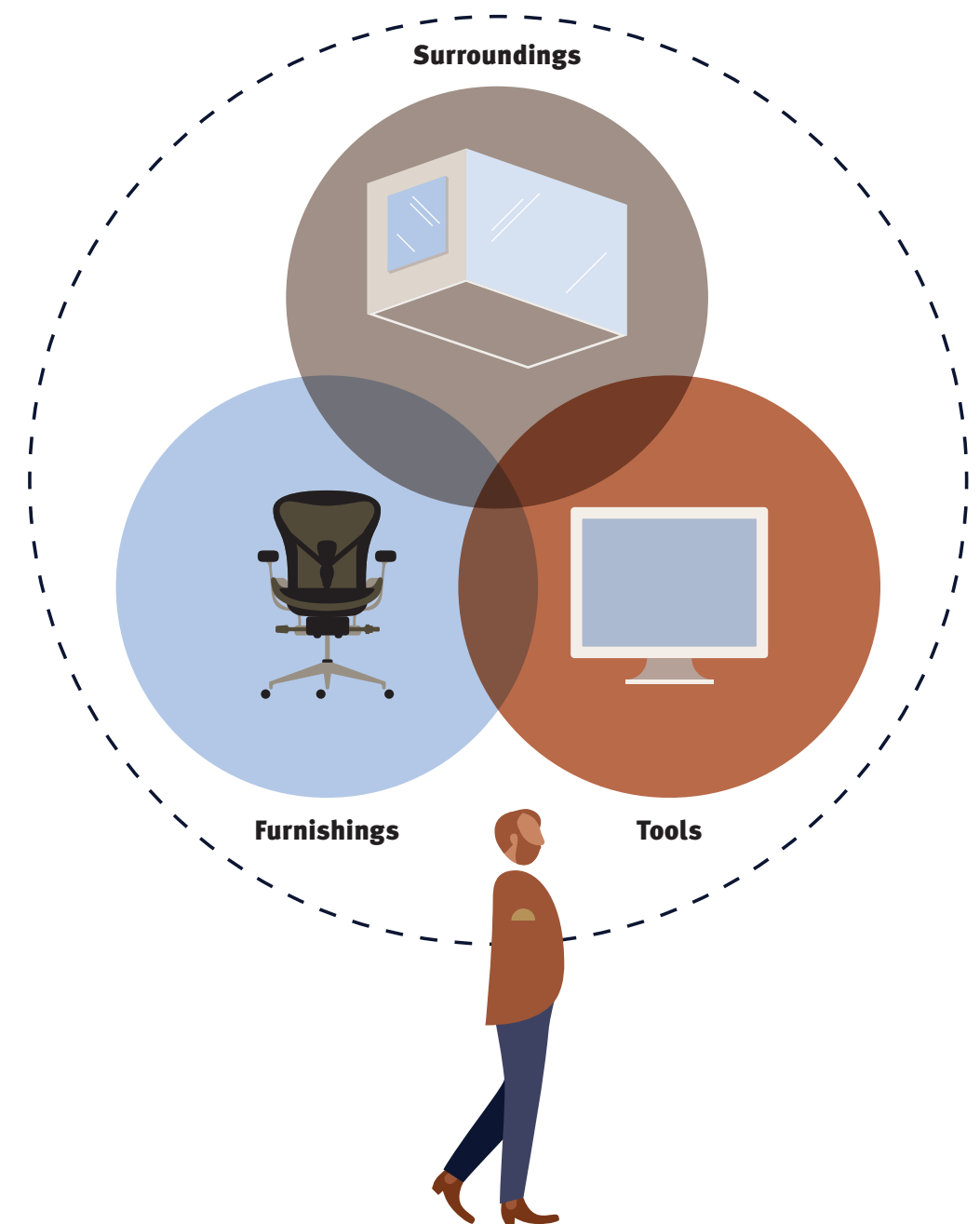
INNER / SPACE

Atlas Office Landscape®

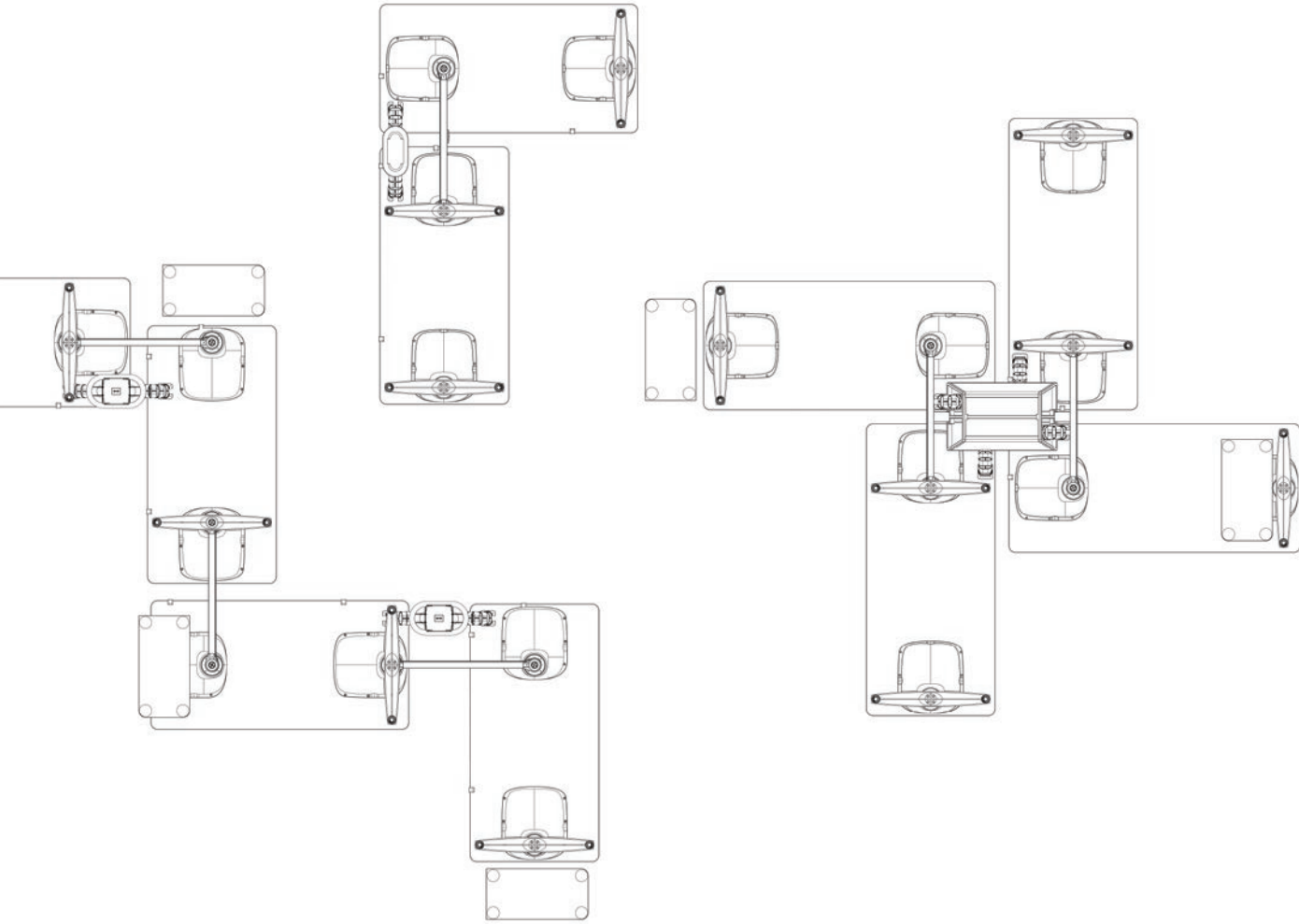
Designed by Tim Wallace

Herman Miller has a long heritage in developing work systems for today's offices. From freestanding furniture in private offices in the 50s, to Action Office and the cubicle in the 60s, 70s and 80s, and more recently to benching systems and height adjustable desking, we understand the needs of the modern workplace, and how to design efficient and robust systems that reflect the way we work.

As work continues to change at a rapid pace, we've created Atlas Office Landscape, a desking system for the modern era – where ideas flow, and people work best in inspiring environments where their individuality and creativity is encouraged, rather than rows and rows of regimented desks. Atlas Office Landscape is the culmination of all our learning, a comprehensive and flexible system that enables the creation of holistic workplaces for 21st century companies and people.



INNER / SPACE



Design Story

When Tim Wallace was approached to create a new height-adjustable solution which reflected desking requirements for the 21st century he immediately saw an opportunity to create something that worked with the whole office environment. “To me the problem wasn’t in creating a single desk, there are plenty of examples of those,” says Tim. “The real challenge comes when that single desk needs to be multiplied and then fitted into a space.”

It was also imperative that Atlas Office Landscape didn’t jar with the other furniture in an office. Tim explains: “One of the visual distractions with height-adjustable furniture is that it inhabits two spaces; both seated and standing. So, what might be hidden when you’re sitting down, cables or the underside of the desk, for example, become instantly visible as soon as you raise the desk up.”

Tim overcame this problem with a unique solution – the development of the ‘leg block’ at the top of each leg, which simultaneously houses the riser mechanism while providing support for the desk top. The ‘leg block’ and connected leg can also be rotated to give further layout possibilities.



Tim Wallace





Challenge Your Space

Atlas Office Landscape is a height-adjustable work system that goes beyond the limitations of the simple sit-stand desk. Its holistic approach encourages imaginative new ways to plan office spaces through a focus on human-centred design and ergonomic excellence.

Combine desks, screens, tables and stowage elements to create spaces that invite collaboration, zones for focused activity or impromptu meetings.



An Intelligent System

Reflecting Herman Miller's long history and expertise in pioneering innovative work systems, Atlas Office Landscape is an inventive design, and different from a standard sit-stand desk system.

A simplified and consistent approach to both componentry and electric options makes configuring and creating large groups of height-adjustable desks as easy as a single workstation. Integrated stowage and meeting tables ensure Atlas has the flexibility to meet each individual's needs with ease.

INNER/SPACE





Curves Not Corners

With its softly curved edges, Atlas Office Landscape has an organic appearance that flows effortlessly through your office space. Crafted to reflect the elegance of a piece of furniture rather than a row of regimented machinery, its rounded aesthetic is consistent across the whole vocabulary.

Work surface, screens, power supply and stowage make spaces feel more organic, more inviting, more human.

Components

Atlas uses shared componentry to make specifying large groups of desks as easy as a single workstation. Desktops, electric options, wire management, leg columns, and stowage can be used across every application.

1400/1500/1600/1700/1800

Primary Worktop

1400/1500/1600/1700/1800/1900/2000

Collaboration Table

1400/1500/1600/1700/1800/1900/2000

Collaboration Table, with Access
(Two or Four Unit)

1400/1500/1600/1700/1800

Primary Screen
(Single Sided or Back-to-back)

1200

Worktop Divider

Leg Column with
Connecting Foot

Leg Column with
Freestanding Foot

Fixed Height Options
Seated 720mm

Sit-stand Range
680mm to 1090mm
650mm to 1250mm

Freestanding Wire
Management Hub

Spar Mounted Wire
Management Hub

300
|400|

Single Stowage Unit
with Door

600
|540|

Double Stowage Unit
with Door

Details and Features



Worktop dividers



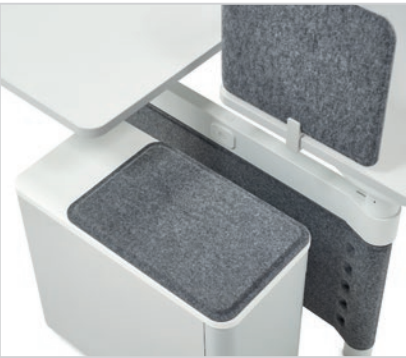
Personal storage options



Electric height-adjustment options



Fixed screen and leg covers



Stowage with seat-pad



Power distribution hubs



Leg blocks

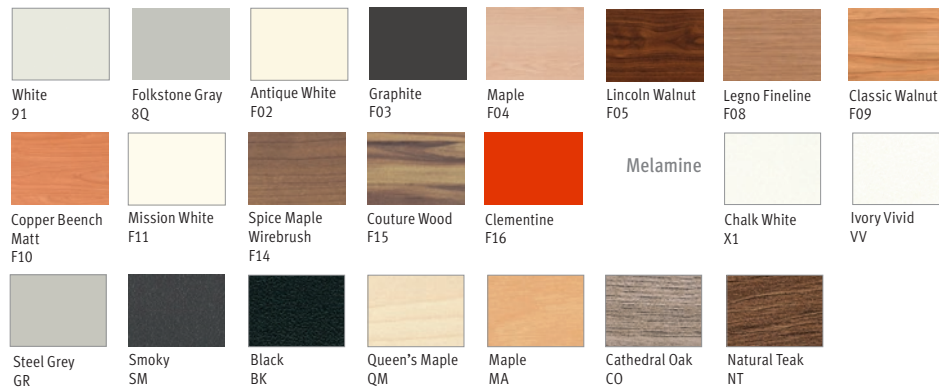


Atlas Office Landscape two-desk cluster

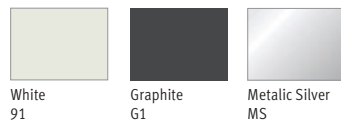
Materials

Please speak to your Herman Miller representative for the most current textile and material offering for Atlas Office Landscape.

Surface Laminates



Frames Paint Finish



Screens Fabric



For more information, please visit hermanmiller.com/apac